

Color: Black

Weight 7.00 lb. | 3.2 kg

Weight Capacity 50 lb. | 22.7 kg

Pole Diameter 0.00 in. | 0 mm

Mounting Pattern 100 x 100, 100 x 200, 200 x 200 mm

Display Range 10.00 - 40.00 in

Tilt +22.00° / -22.00°

Downloads at Mounts.com



[Data Sheet](#)



[Bid Specification Document](#)



[Installation Manual](#)



[Dimensional Drawing](#)



[CAD File](#)



[High Resolution Image](#)



50 lb.



+22.00°  
-22.00°



100 x 100



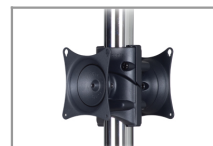
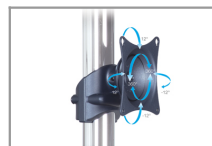
100 x 200



200 x 200



10-40 in



## DESCRIPTION

The universal VESA Pole Mount fits mounting patterns up to 200 x 200mm. Its Radial Glide feature offers up to 12 degrees of smooth pivot adjustment in any direction, and once the adjustment is complete, the display remains supported and in a fixed position. The angled shape of the VPM allows back-to-back mounting.

## FEATURES

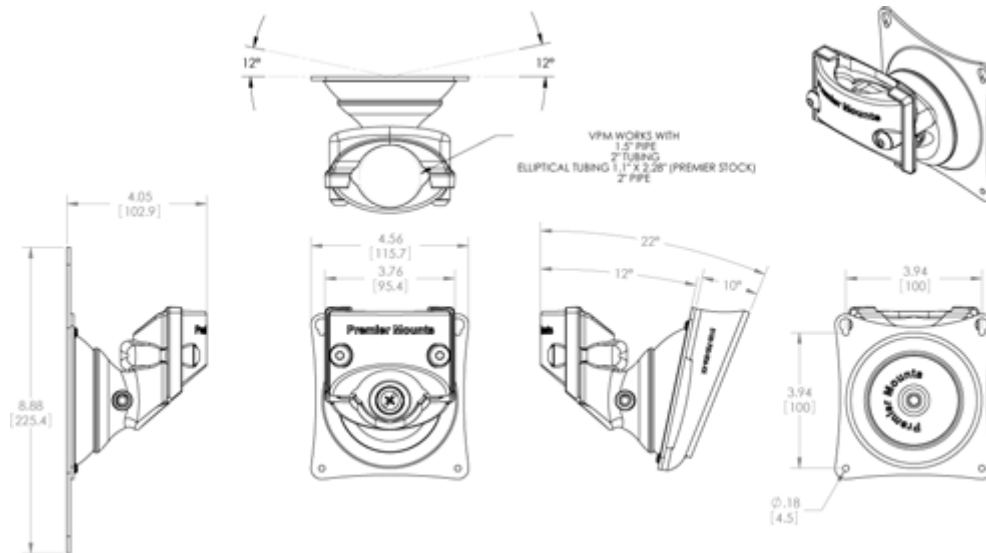
- Twelve degrees of omni-directional movement
- Perfect for mounting public view monitors
- Angled shape allows two VPMs to be mounted in a back-to-back position
- Mounts on poles and pipes with a diameter of up to 2 in. The minimum pipe size is Schedule 40 1 1/2 in. (4.82 cm)
- Heavy-duty design makes this mount ideal for security, rental and staging applications
- Includes both standard and Lock-It™ security hardware pack
- Includes 200 x 200 VESA adapter plate and tilt adapters that allow and additional 10° of tilt (22° total)



# VPM

## Universal VESA Pole Mount

DOWNLOAD FULL SIZE CAD FILES AND DIMENSIONAL DRAWINGS AT [MOUNTS.COM](http://MOUNTS.COM)



### RELATED PRODUCTS FOR VPM



#### IPM-100

Protected Mounting Frame for iPads™ with VESA Mounting Pattern



#### AST-2446

Adjustable-Height Ceiling Adapter (24 - 46 in.)



#### PSP-60

Low-Profile Single-Pole Floor Stand with 60 in. Chrome Pole



#### MM-CP15

15" Single Pole W/ Clamp Base



#### MM-CP28

28" Single Pole W/ Clamp Base

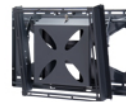
[MORE AT MOUNTS.COM](http://MOUNTS.COM)

### SIMILAR PRODUCTS



#### VPM

Universal VESA Pole Mount



#### GB-MS2

Tilting Flat-Panels Mount for Displays up to 175 lb. and Integrated Storage



#### PTM-B

VESA Tilt and Pivot Mount for Flat-Panels



#### CTM-MS2

Tilting Mount for Flat-Panels up to 175 lb./79 kg



#### P5080T

Tilting Low-Profile Mount for Flat-Panels up to 300 lb. /136kg



#### PCM-MS3

Tilting wall mount fits 55 inch-63 inch displays

[MORE AT MOUNTS.COM](http://MOUNTS.COM)



World Headquarters | 1321 S. State College Blvd., Fullerton, CA 92831 | 800.368.9700 USA | F 800.832.4888 | [www.mounts.com](http://www.mounts.com)  
Europe Office | Unit 3, The Moorings Business Park, Channel Way | Longford, Coventry, CV6 6RH, UK | +44 (0) 2476 644105 | F +44 (0) 2476 64416  
© 2013 PREMIER MOUNTS | Rev.01 | 10.2011